

MONTHLY MEMBERSHIP PROGRESS REPORT

District 33 A

Results as of: 3/31/2026

GMT:

LOCATION MASSACHUSETTS

GMT CA

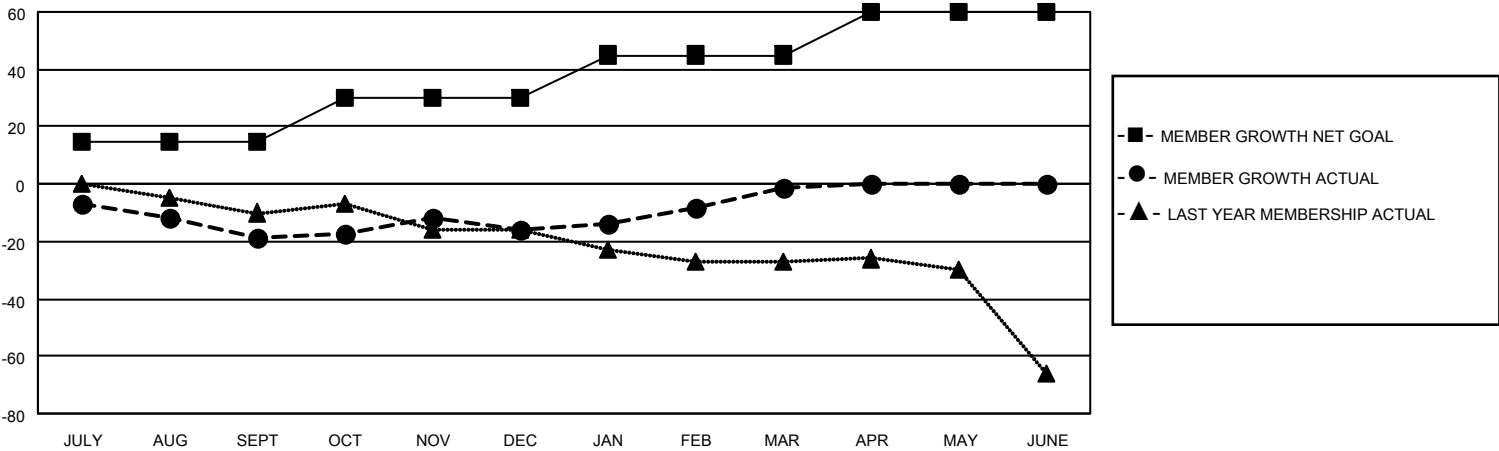
Clubs			
RESULTS FOR 2025-2026			
QUARTER	NEW CLUB GOAL	NEW CLUBS	DROPPED CLUBS
JULY/AUG/SEPT	0	0	0
OCT/NOV/DEC	0	0	0
JAN/FEB/MAR	1	0	0
APR/MAY/JUNE	0	0	0

Members			
RESULTS FOR 2025-2026			
QUARTER	MEMBER GROWTH NET GOAL	MEMBER GROWTH ACTUAL	DROPPED MEMBERS ACTUAL (including transfers)
JULY/AUG/SEPT	15	14	33
OCT/NOV/DEC	15	28	22
JAN/FEB/MAR	15	27	8
APR/MAY/JUNE	15	0	0

GOALS AND ACTUAL NEW CLUBS CUMULATIVE



GOALS AND ACTUAL MEMBERS CUMULATIVE



DROPPED CLUBS: 0	24 CLUBS OF 45 ADDED 1 OR MORE NEW MEMBERS	GENDER DISTRIBUTION MALE 732 (63.16%) FEMALE 427 (36.84%)
DROPPED MEMBERS DECEASED 8 CLUB CANCELLED 0 OTHER 55 TOTAL 63	CLICK HERE FOR CUMULATIVE MEMBERSHIP DATA	TOTAL FAMILY UNIT MEMBERS 240 FAMILY MEMBERS PAYING HALF DUES 124